



ESI[tronic] 2.0 installation instructions

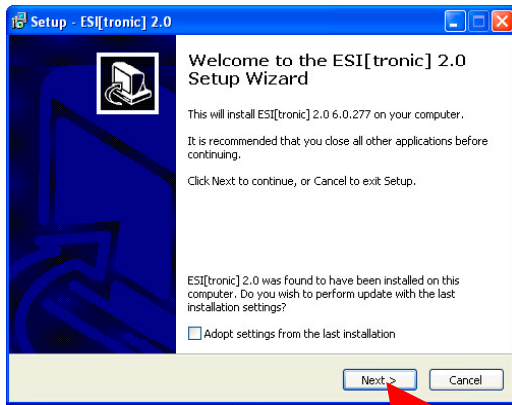
Page 1 of 2



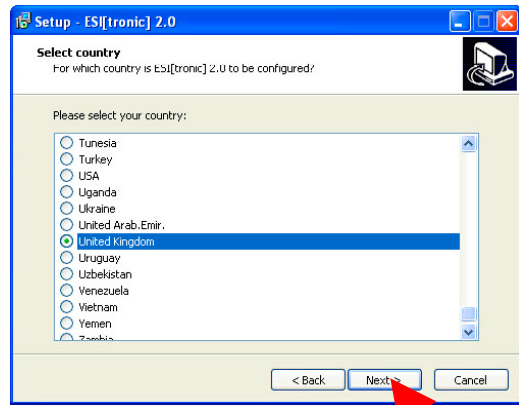
Double click setup file on ESI[tronic] 2.0 DVD



Choose a language from the drop down menu



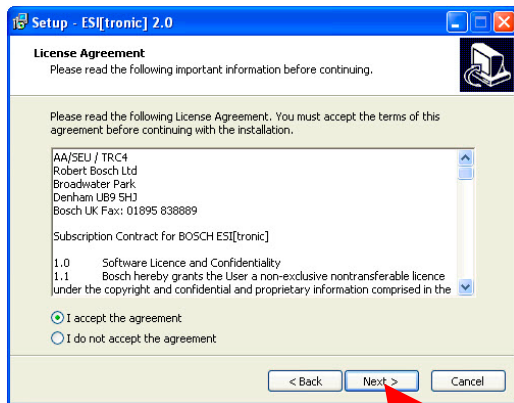
Click the next button (if reinstalling an installation, tick the adopt settings box)



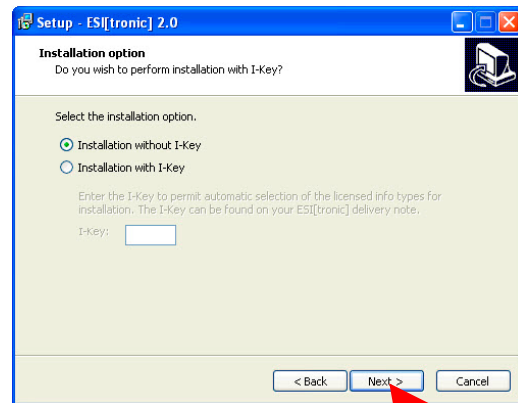
Choose your country and click the next button

ESI[tronic] 2.0 installation instructions

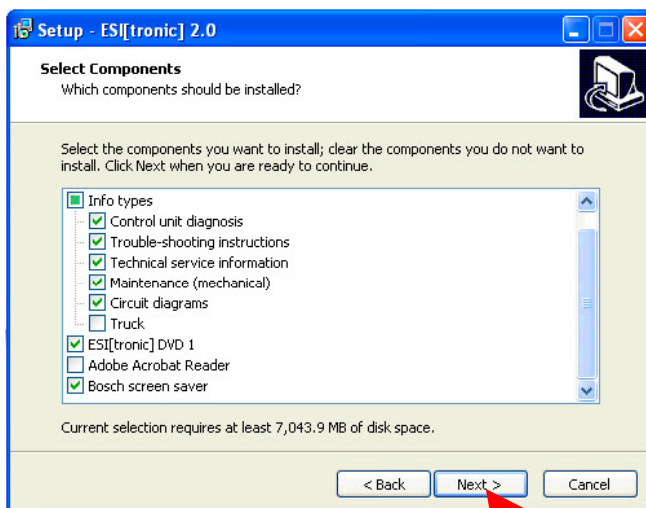
Page 2 of 2



Read and accept the agreement then click the next button



If you have an installation I-key enter it in the box, otherwise choose install without I-key



Tick all the info-types except for Truck, click next

* DVD1 will install the parts catalogue in the Classic ESI[tronic] program (see separate Classic installation instructions)

* Adobe Acrobat Reader needs to be installed if not already on the computer

* Bosch screen saver can be installed (optional)

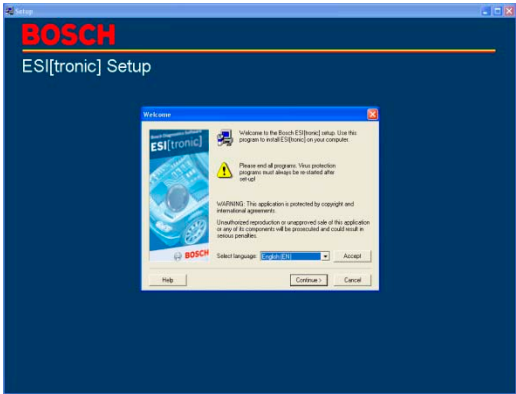
Refer to licensing instructions to apply for your release code



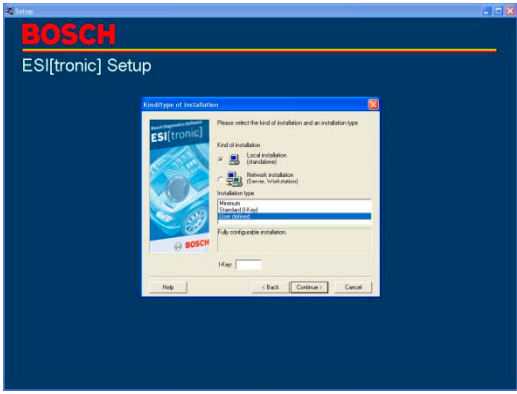
ESI[tronic] classic installation instructions

Page 1 of 2

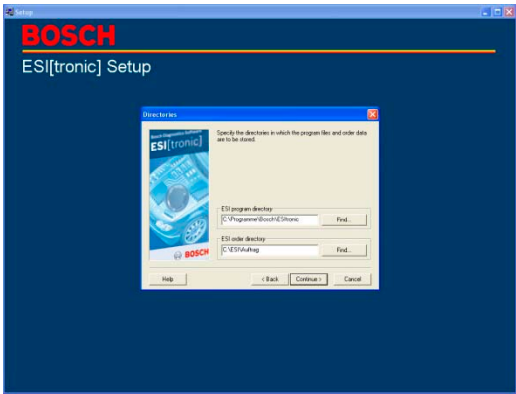
(Runs from DVD1 disk after ESI 2.0 installation)



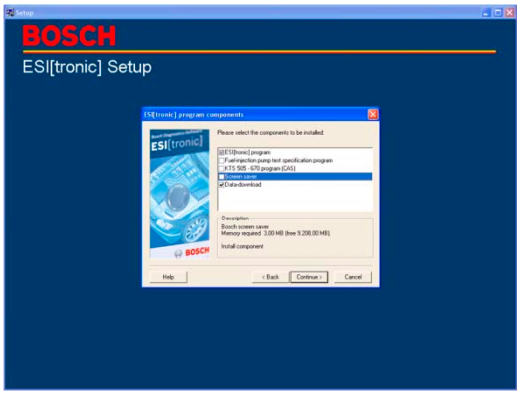
Choose a language from the drop down menu and click continue



Choose user defined and click continue



Leave the directories as they are and click continue

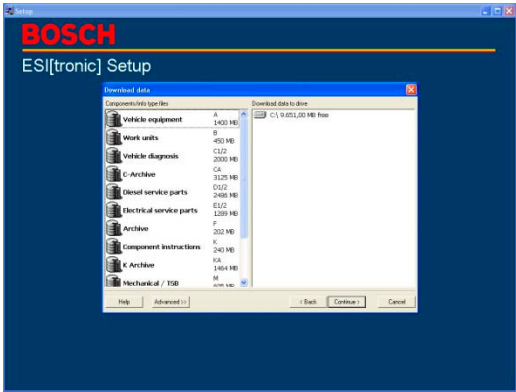


Only tick data download and click next (leave top ESI[tronic] option ticked)

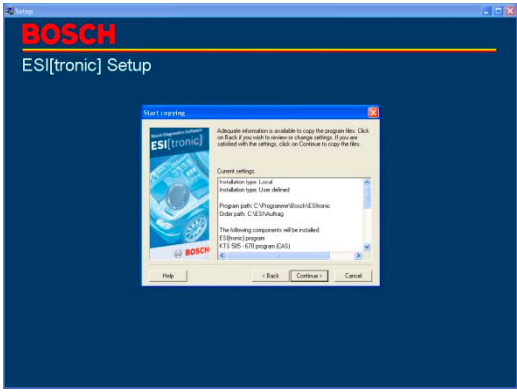


ESI[tronic] classic installation instructions

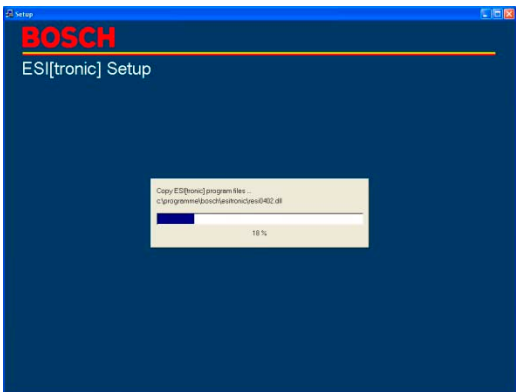
Page 2 of 2



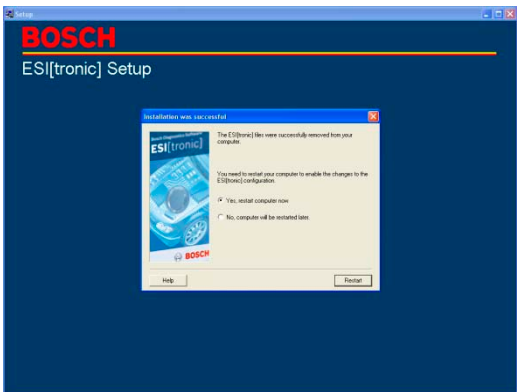
Drag across to the right hand panel:
Vehicle equipment
ZF assembly instructions
ZF Parts catalogue



Click continue to the confirmation screen



Installation bar shows progress of the installation



Reboot the computer when asked to do so

Refer to licensing instructions to apply for your release code